

# Pipelines and Landscapes Map

Chester County, PA



## Growth Areas

- Urban Center
- Suburban Center
- Suburban
- Rural Center

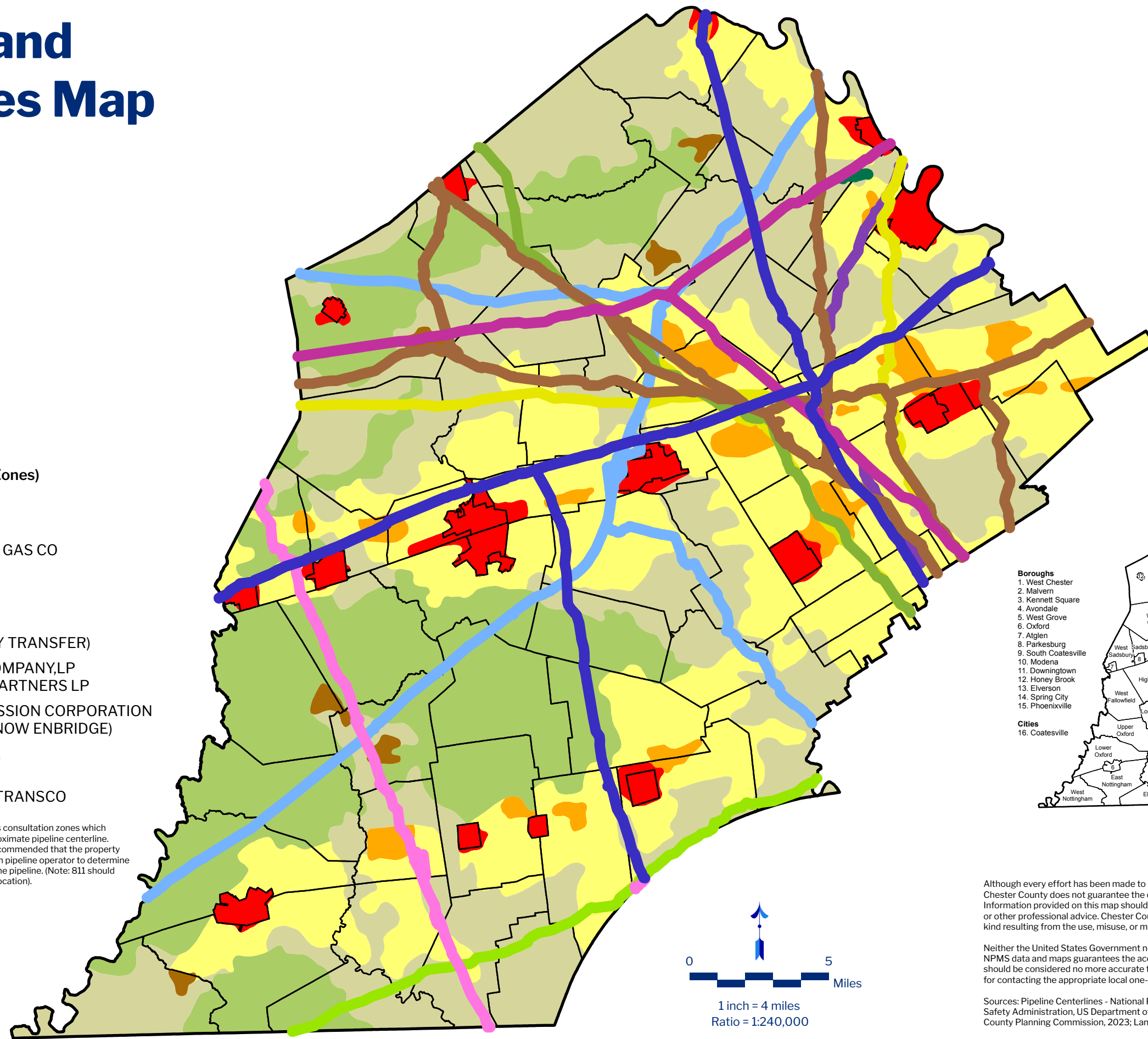
## Rural Resource Areas

- Rural
- Agricultural

## Pipeline Operators (Consultation Zones)

- ADELPHIA GATEWAY, LLC
- COLONIAL PIPELINE CO
- EASTERN SHORE NATURAL GAS CO
- LAUREL PIPELINE CO/  
BUCKEYE PARTNERS, LP
- PECO ENERGY CO
- SUNOCO PIPELINE (ENERGY TRANSFER)
- TE PRODUCTS PIPELINE COMPANY,LP  
/ENTERPRISE PRODUCTS PARTNERS LP
- TEXAS EASTERN TRANSMISSION CORPORATION  
/DUKE/SPECTRA ENERGY (NOW ENBRIDGE)
- TRANSCANADA/COLUMBIA  
GAS TRANSMISSION, LLC
- WILLIAMS GAS PIPELINE - TRANSCO

Consultation Zones - The pipeline corridors are depicted as consultation zones which represent a distance of 1000 feet on each side of the approximate pipeline centerline. If property development is planned within this zone, it is recommended that the property owner or developer initiate a dialogue with the transmission pipeline operator to determine if their proposed development will impact the integrity of the pipeline. (Note: 811 should always be called prior to any digging job regardless of the location).

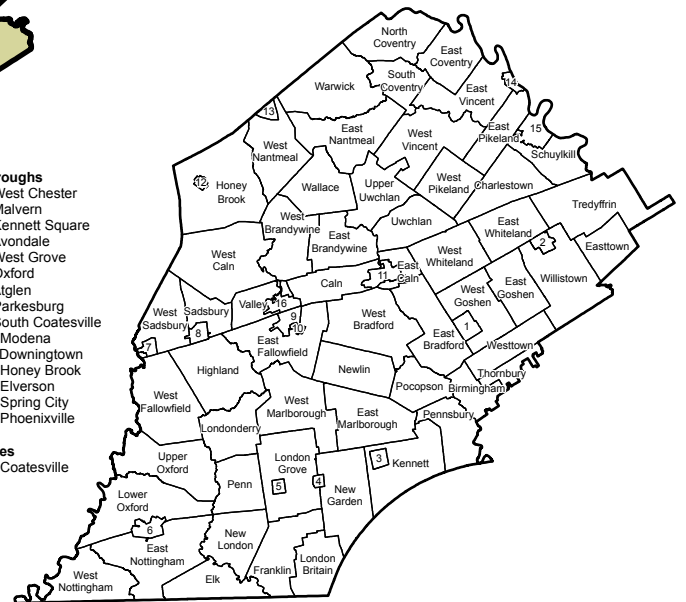


## Boroughs

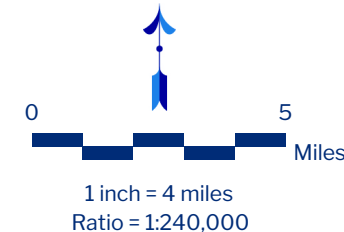
1. West Chester
2. Malvern
3. Kennett Square
4. Avondale
5. West Grove
6. Oxford
7. Atglen
8. Parkesburg
9. South Coatesville
10. Modena
11. Downingtown
12. Honey Brook
13. Elverson
14. Spring City
15. Phoenixville

## Cities

16. Coatesville



Date: 6/12/2023



Although every effort has been made to provide complete, accurate, and current information, Chester County does not guarantee the quality or completeness of the included information. Information provided on this map should not be used for legal, survey, engineering, financial, tax, or other professional advice. Chester County specifically disclaims liability for damages of any kind resulting from the use, misuse, or misrepresentation of any information contained herein.

Neither the United States Government nor any party involved in the creation and compilation of NPMS data and maps guarantees the accuracy or completeness of the products. NPMS data should be considered no more accurate than +/- 500 feet and must never be used as a substitute for contacting the appropriate local one-call center prior to digging.

Sources: Pipeline Centerlines - National Pipeline Mapping System, Pipeline and Hazardous Materials Safety Administration, US Department of Transportation, 2022; Pipeline Operator Information - Chester County Planning Commission, 2023; Landscapes Map - Chester County Planning Commission, 2016.